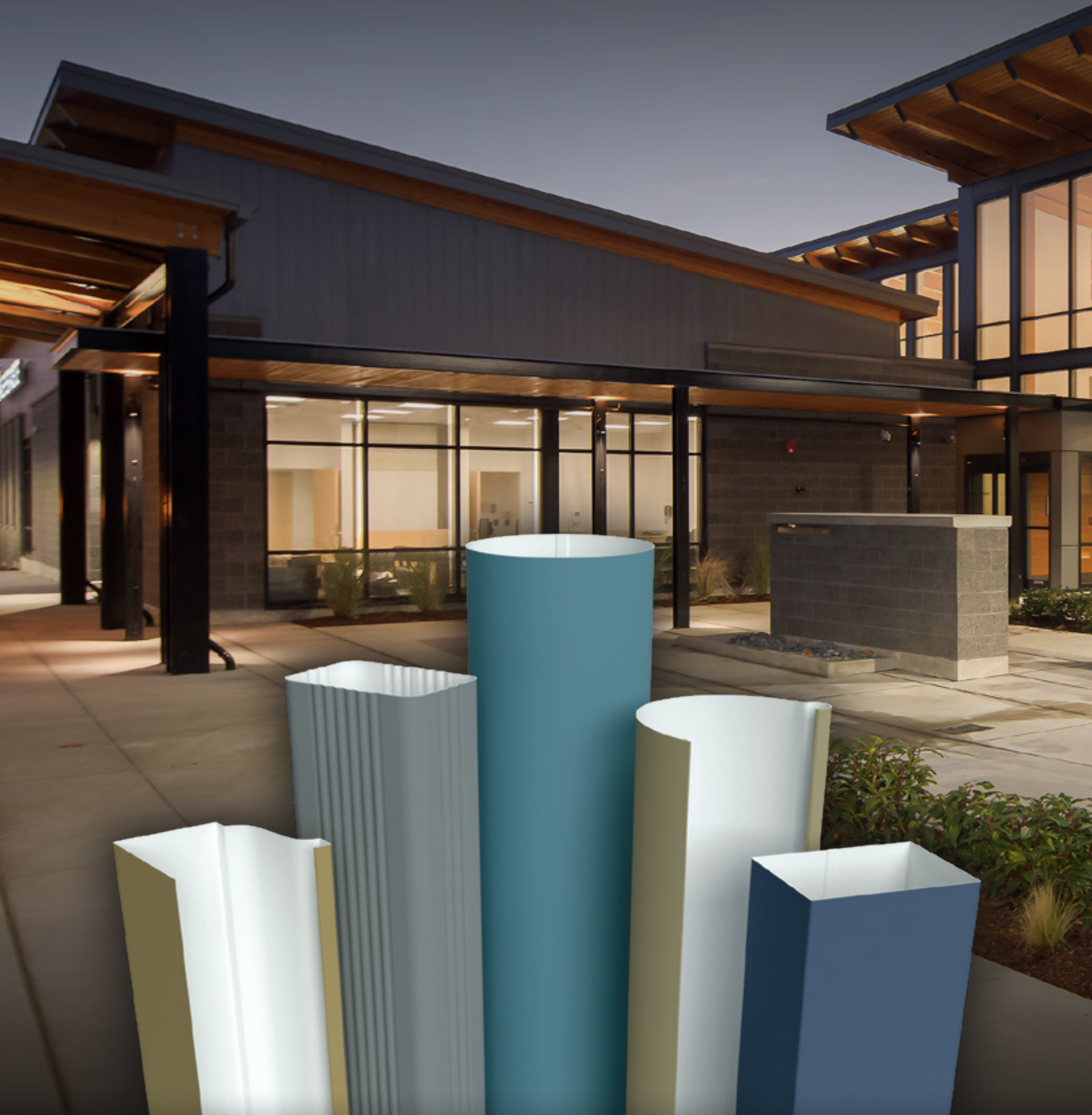




RDCA
ROOF DRAINAGE COMPONENTS
& ACCESSORIES



ARCHITECTURAL WATER CONTROL PRODUCTS

www.rdcaa.com



ARBOR GRANDE .032" Aluminum 6" Half Round Downspout, .032" Aluminum 4" Round Downspout & Elbows



Commercial & Architectural Roof Drainage Components

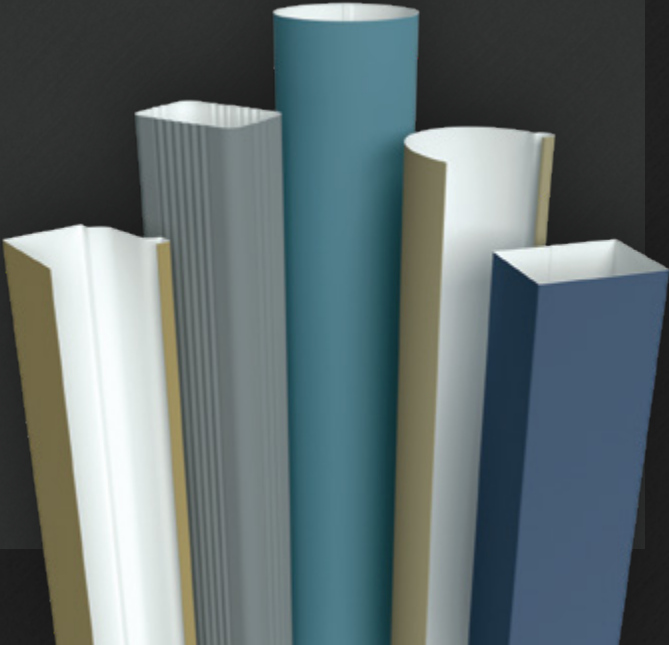
Welcome to Roof Drainage Components & Accessories, Inc., where our entire focus is to provide the highest quality commercial roof drainage components as specified by architects, specifiers, pre-engineered building designers, general contractors, roofing consultants and building owners.

We custom fabricate more than 2,500 components and accessories to meet your specific needs in over 400 colors and 17 different material substrates.

We invite you to review our brochure and website and contact us by phone, e-mail or fax with any questions you may have.

RDCA Applications.....	2-3
Half Round Gutter System.....	4
Round Downspout System.....	5
Smooth Box Gutter System	6-7
Smooth Box Downspout System	8
Corrugated Downspout System	9
K-Style Gutter System	10
Primary Metal Suppliers	11
Warranty	11

Cover: GROUP HEALTH BURIEN .040" Aluminum
3" Round Downspout & Custom Elbows





FRANK GEHRY RESIDENCE 24 Gauge 304 Stainless Custom Collector Head, 24 Gauge 304 Stainless 3" Round Downspout & Custom Elbows



40 N. EUCLID 24 Gauge 4" Round Downspout, Custom Collector Boxes



SUNY NEW PALTZ 24 Gauge 316 Stainless 10" Quarter Round Gutter, 24 Gauge 316 Stainless 4" Round Downspout & One-Piece Offsets

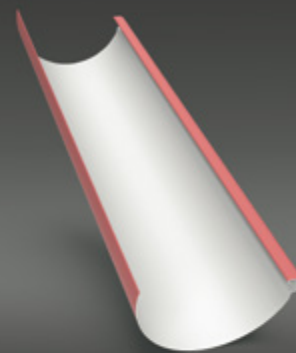


HALE MAHAOLU EWALU .032" Aluminum 3" Round Downspout & Elbows



Half Round Gutter System

If you need a custom roll-formed half round gutter system, unlike most suppliers, RDCA offers virtually any size, in any metal thickness. Choosing from 17 metal vendors and more than 400 colors, RDCA roll forms 5" through 12" half round gutter in .032" - .050" aluminum, 29-22 gauge steel, 28 - 22 gauge stainless steel, 16 - 24 oz copper and .7mm zinc. To complete your requirements RDCA fabricates all your needed components per your exact specifications.



GUTTER

Sizes: 5", 6", 7", 8", 9", 10", 11", 12"

MATERIALS

- 22, 24, 26, 29 GA Steel
- 16, 20, 24 oz Copper
- .032", .040", .050", .063" Aluminum
- 22, 24, 26, 28 GA Stainless Steel
- .7 mm Zinc

ACCESSORIES



Bracket



Endcap

ARBOR GRANDE .032" Aluminum 6" Half Round Gutter,
.032" Aluminum 4" Round Downspout & Elbows



MITERS



Inside



Outside



Color Charts

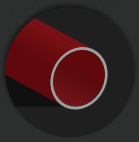


Warranty



See
Page
11

Webpage Reference: [rdcaa/half-round-gutter-system](https://rdcaa.com/half-round-gutter-system)
For The Architect: Half Round Gutter Specification



Round Downspout System

Growing in popularity with architects, RDCA manufactures roll-formed round downspouts, elbows, and offsets in diameters ranging from 3" - 12". With 17 different metal suppliers and over 400 colors offered in .032" - .050" aluminum, 22 - 29 gauge steel, 22 - 28 gauge stainless, 16, 20 and 24 ounce copper and .7 mm zinc, RDCA is eager to provide even your most unusual requirement. In addition, to complete your project, RDCA can supply all the complementary components including custom outlet tubes, straps and brackets.

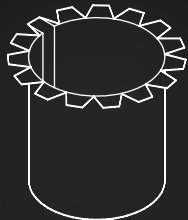
MATERIALS

- 22, 24, 26, 29 GA Steel
- .032", .040", .050", .063" Aluminum
- 16, 20, 24 oz Copper
- 22, 24, 26, 28 GA Stainless Steel
- .7 mm Zinc

ACCESSORIES



Strap



Outlet



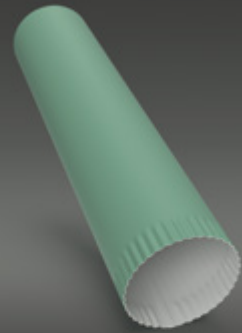
Color Charts



Warranty



See
Page
11



DOWNSPOUT

Sizes: 3", 4", 5", 6", 7", 8", 9",
10", 11", 12"



ELBOW

Sizes: 3", 4", 5", 6"
(Mitered 7" - 12")



OFFSET

Sizes: 3", 4", 5", 6"
(Mitered 7" - 12")

Webpage Reference: rdcaa/round-system
For The Architect: Half Round Gutter Specification



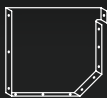
Smooth Box Gutter System

RDCA can provide any custom or box style gutter you need in lengths up through 20'. No need to compromise. Show us what you need and we can quote it. And any thickness up through .063" aluminum, 20 gauge steel or stainless steel, as well as copper or zinc are readily available. Need a special color? RDCA offers colors from 17 different metal suppliers as well as post painted custom colors. Like all RDCA product lines, all the necessary components to complete your order are readily available.

MATERIALS

- 20, 22, 24, 26, 29 GA Steel
- 16, 20, 24 oz Copper
- .032", .040", .050", .063" Aluminum
- .20, 22, 24, 26, 28, GA Stainless Steel
- .7 mm Zinc

ACCESSORIES



Box End Caps



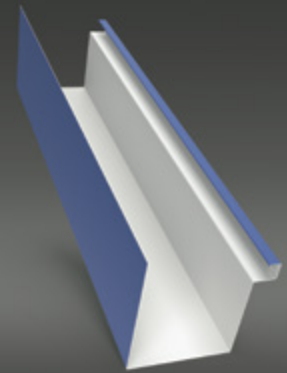
Stamped Hidden Hangers



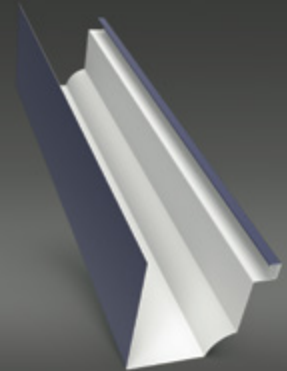
Support Brackets



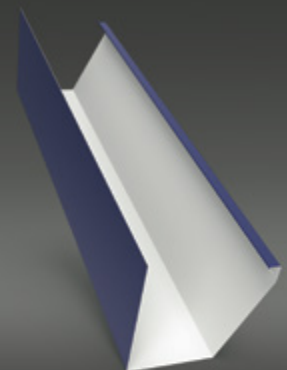
Expansion Joints



A-STYLE



E-STYLE



I-STYLE



Color Charts



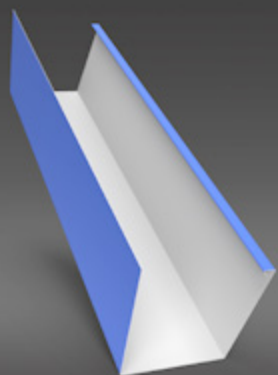
Warranty



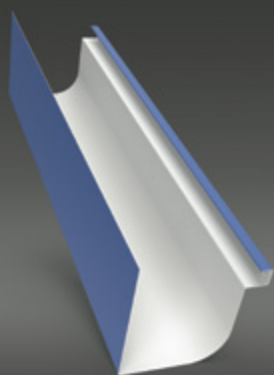
See
Page
11

Webpage Reference: rdcaa/smooth-box-gutter-system

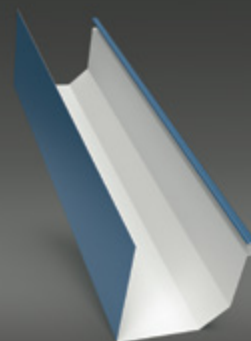
For The Architect: Custom Box Gutter Specification



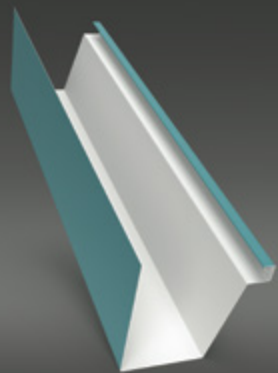
B-STYLE



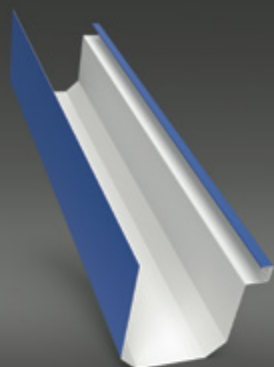
C-STYLE



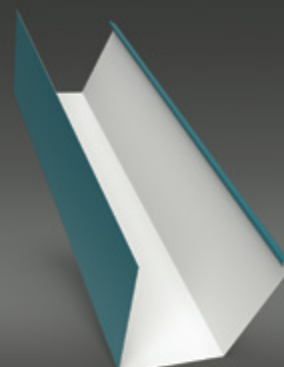
D-STYLE



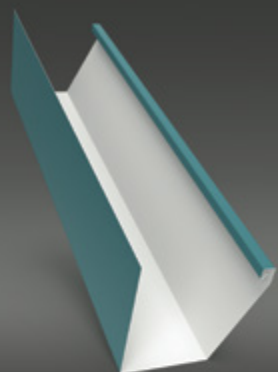
F-STYLE



G-STYLE



H-STYLE



J-STYLE



L-STYLE



CUSTOM PROFILES AVAILABLE

Submit a drawing and
metal requirements of
what you need and RDCA
can provide pricing.



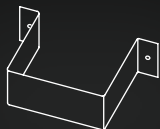
Smooth Box Downspout System

RDCA offers made-to-order smooth rectangular downspouts up through 20' along with offsets and elbows, in any size with dimensions up through 47". This product line is readily available in .032"-.063" aluminum, 22 - 29 gauge steel, 22 - 28 gauge stainless, 16, 20, & 24 oz copper and .7mm zinc. Like all RDCA products, virtually any color is hassle-free as RDCA has access to more than 17 metal suppliers and more than 400 colors. To complete your project, RDCA also provides all the necessary components ranging from collector heads to straps to transitions and everything in between.

MATERIALS

- 20, 22, 24, 26 GA Steel
- 16, 20, 24 oz Copper
- .032", .040", .050", .063" Aluminum
- 20, 22, 24, 26, 28 GA Stainless Steel
- .7mm Zinc

ACCESSORIES



Strap



Downspout Outlet



Collector Head



Transition



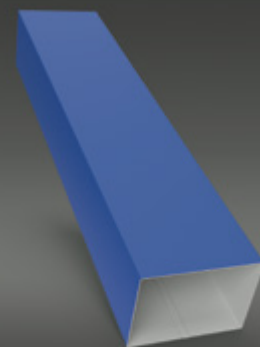
Color Charts



Warranty

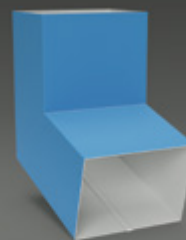


See
Page
11



DOWNSPOUT

H 2'-21"; W 2'-21"; L 1'-20'



ELBOW



A Style
Seam Long
Side



A Style
Seam Short
Side



B Style
Left Turn



B Style
Right Turn



OFFSET



A Style
Down



A Style
Up



B Style
Left Turn



B Style
Right Turn

Webpage Reference: rdcaa/smooth-box-downspout-system

For The Architect: Custom Box Gutter Specification



Corrugated Downspout System

3x4 and 4x5 corrugated downspout manufactured by RDCA can be customized to eliminate many components typically required during installations. In addition to being available in any custom length and more than 400 colors, RDCA can also produce downspout with either an integrated offset or elbow. It's all one piece made to the length specified, with the offset or elbow dimensions required. This saves the installer a substantial amount of money in material cost and installation time. In addition, due to the very limited number of pieces required, the appearance of the finished project is very appealing. And like always, RDCA can provide all required components.

MATERIALS

Downspout

- 22, 24, 26, 29 GA Steel
- 16, 20, 24 oz Copper
- .027", .032", .040" Aluminum
- .7 mm Zinc

Offset

- 24, 26, 29 GA Steel
- 16, 20, 24 oz Copper
- .027", .032" Aluminum
- .7 mm Zinc

Elbow

- 24, 26, 29 GA Steel
- 16, 20, 24 oz Copper
- .027", .032" Aluminum
- .7 mm Zinc

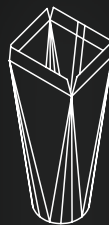
ACCESSORIES



Strap



Seamless Outlet



Downspout Transition



Collector Head



Bracket



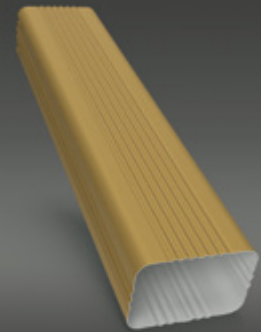
Color Charts



Warranty

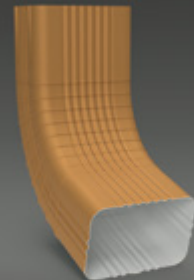


See
Page
11



DOWNSPOUT

Sizes: 3"x 4", 4"x 5"



ELBOW



A Style
Seam Long
Side



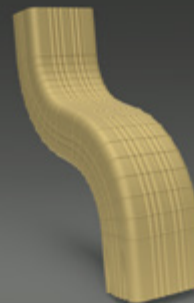
A Style
Seam Short
Side



B Style
Left Turn



B Style
Right Turn



OFFSET

Sizes: 3"x 4", 4"x 5"



A Style
Down



A Style
Up



B Style
Left Turn



B Style
Right Turn

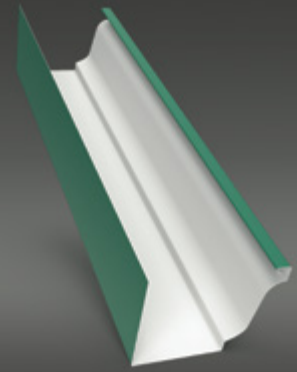
Webpage Reference: rdcaa/corrugated-rectangular-downspout-system

For The Architect: Custom Box Gutter Specification



K-Style Gutter System

RDCA offers 5" through 12" (and larger) K-Style gutter with or without a backflange. Lengths up through 20' are available for all sizes and up through 40' feet for 5" and 6". If you need extra thick metal, we also have that covered. Thicknesses up through .063" aluminum, 20 gauge steel, 20 gauge stainless steel, 24 oz copper and .7 mm zinc are readily available. Regarding colors, there are over 400 to choose from as well as post painted custom colors. Of course, to complete any installation, RDCA offers all your needed components - made to your exact specifications.



GUTTER

5", 6", 7", 8", 9", 10", 11", 12"

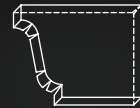
MATERIALS

- 20, 22, 24, 26, 29 GA Steel
- 16, 20, 24 oz Copper
- .032", .040", .050", .063" Aluminum
- 20, 22, 24, 26, 28 GA Stainless Steel
- .7 mm Zinc

ACCESSORIES



Stamped Hidden Hangers



End Caps



Gutter Support Brackets



Gutter Expansion Joints

Webpage Reference: rdcaa/k-style-system

For The Architect: Custom Box Gutter Specification

RANDOLF COMMUNITY CENTER .050" Aluminum 6" Half Round Gutter, .050" Aluminum 4" Round Downspout & Elbows





RDCA Quote PDF's

(download at www.rdcaa.com)



Round
Downspout System



Smooth Box
Downspout System



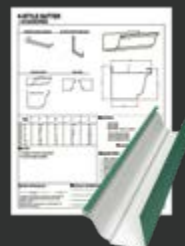
Corrugated Rectangular
Downspout System



Smooth Custom Box
Gutter System



Half Round
Gutter System



K-Style
Gutter System



RDCA Warranty

RDCA will supply all products as specified by the customer including metal substrate, paint color and paint systems, dimensional specifications and product quantity. If an error is made, RDCA will either replace the product(s) for which the error was made and/or repair said product, at no charge to the customer.



Color Charts

RDCA offers over 400 colors from 17 different metal suppliers as well as post painted custom colors.

Visit rdcaa.com/color-charts to view our color charts. Want to see our colors in person? Have a color chart or color chips sent right to you.



And more...



FOOTHILLS YMCA 24 Gauge 3x4 Corrugated Downspout & Elbows



JSU BREWER HALL 24 Gauge 8" K-style Gutter & Custom Components



FIRST ASSEMBLY CHRISTIAN SCHOOL
24 Gauge 4x5 Corrugated Downspout - Custom Lengths



RDCA
ROOF DRAINAGE COMPONENTS
& ACCESSORIES

sales@rdcaa.com
706-692-7333
60 Don Westbrook Ave. North
Jasper, GA 30143
www.rdcaa.com